



**OPERATING
MANUAL
2019-2020**

WIBCA (est. 1978)

Founded in 1978, The Washington Interscholastic Basketball Coaches Association, WIBCA, is the main association of high school boys' basketball coaches for the state of Washington. We are a non-profit 501 (c) (3) organization under the umbrella of the Washington State Coaches Association. WIBCA is made up of current and former high school basketball coaches from the state of Washington. Our mission is to enhance the lives of student-athletes through the game of basketball. On and off the court, we foster and develop lifelong values that enable players to become better people and pillars of their community. WIBCA is overseen by a comprehensive executive board that consists of a past president, executive director, president, vice president, secretary, treasurer and several coordinators that each oversee the many events and opportunities that WIBCA provides for our student-athletes and coaches. Through statewide events, WIBCA provides opportunities for players to improve and follow their dreams to play college basketball while pursuing a university degree. WIBCA provides three, \$1000.00 scholarships and "giving back" opportunities for participants. We mentor the development of young coaches through two annual clinics and hall of fame recognition for exemplary head and assistant coaches. WIBCA also gives a statewide honor recognizing a coach or contributor to the sport for their positive contribution to the game in the "*Pat Fitterer-You Gotta Love it Positive Coach/Contributor*" award. WIBCA is the most active state basketball coaches association this side of the Mississippi, as we're involved at the national level as members and leaders of the NHSBCA, National High School Basketball Coaches Association.

WIBCA is a tax-exempt organization under 501(c) (3) of the Internal Revenue Code, Tax ID number 26-4593613.

Your donation qualifies for a tax deduction as a charitable contribution to the extent permitted by law.

2019: A BANNER YEAR FOR WIBCA

In 1974 WIBCA's Founding Fathers gathered to create an organization to represent and support high school basketball and coaches in the state of Washington. The Washington Interscholastic Basketball Coaches Association (WIBCA) was started by legendary coaches such as Ed Pepple, Don Koplitz, Jim Harney, Wayne Gilman, Lyle Patterson, and Mel Bowden. WIBCA is thriving and continuing to serve over forty years later.

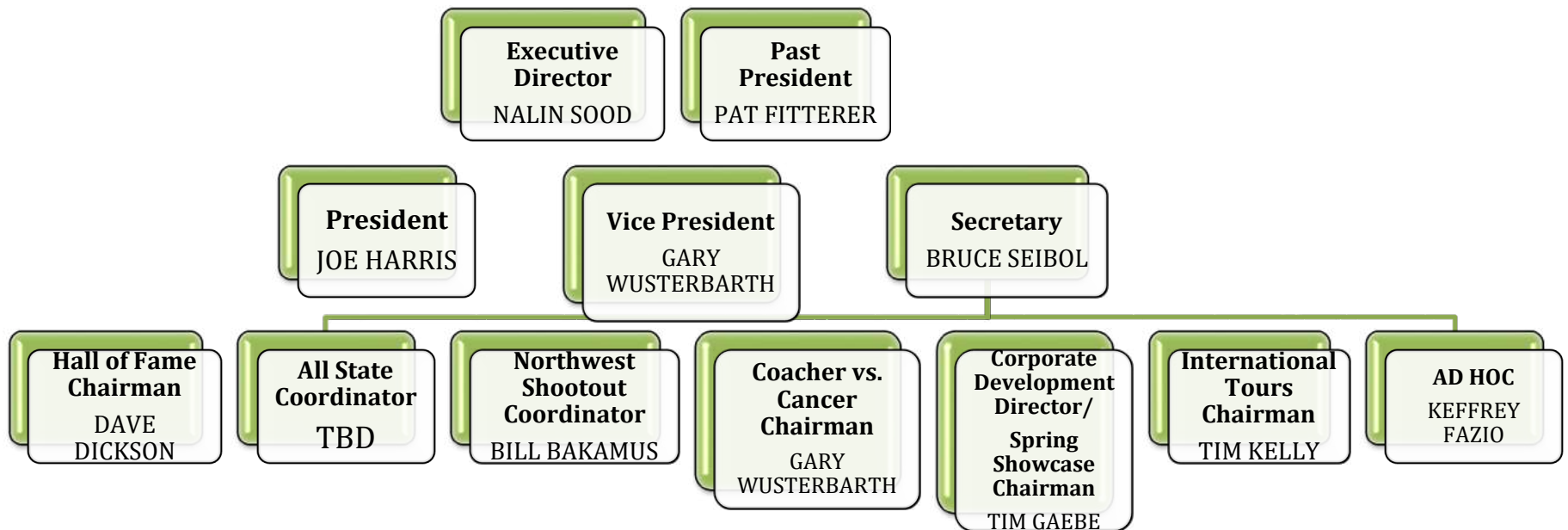
Today, in addition to advocating for and representing high school basketball and its coaches, WIBCA provides countless services and opportunities for coaches and players. Some of them include six All-State games, a Spring Showcase Event, a Hall of Fame induction banquet, and scholarship offerings to student-athletes. For the fourth year, the 60 participants in All State games are not charged a fee. Each fall, WIBCA sponsors a Coaches Clinic in Yakima in conjunction with the weekend of its general membership meeting. During the basketball season, WIBCA encourages and provides support for coaches to hold a Coaches vs Cancer game in their leagues and gyms. The coaches' association selects a player of the year for each classification and a "Mr. Basketball". Each year WIBCA fields a team for the Northwest Shootout, where our state's seniors play the best of Oregon. This year the Shootout was won by the good guys.

This summer two new events were added to WIBCA's busy calendar. The first was a Regional NCAA D1 Recruiting Showcase game June 29-30. Attempting to overhaul the D1 recruiting process, the NCAA has encouraged state coaches' associations to host showcase recruiting events. WIBCA responded by providing the largest such showcase in the nation. With 128 players from 8 states and over 80 collegiate coaches attending, WIBCA's D1 Showcase was seen by the NCAA as a prototype for future showcases nationwide. A second summer event on the docket was hosting the National High School Basketball Coaches Association Annual Congress in Seattle July 9-11. Hosting 49 leaders from 21 states, the NHSBCA Convention enables state associations to share ideas and cast a collective vision for American high school basketball with the beauty of Seattle summertime as a backdrop.

Since its inception 40 years ago, WIBCA has done much to serve and represent the coaches and players of our state. It is a credit to the association that WIBCA is able to positively impact coaches and players statewide and beyond!

*WIBCA is a tax-exempt organization under 501(c) (3) of the Internal Revenue Code, Tax ID number 26-4593613.
Your donation qualifies for a tax deduction as a charitable contribution to the extent permitted by law.*

WIBCA BOARD OF CONTROLS -2020



WIBCA is a tax-exempt organization under 501(c)(3) of the Internal Revenue Code, Tax ID number 26-4593613. Your donation qualifies for a tax deduction as a charitable contribution to the extent permitted by law.

WIBCA BOARD OF CONTROLS-TITLES AND RESPONSIBILITIES

Past President:

- Annual Clinic coordinator
- Liaison to Washington State Coaches Association
- MC at Hall of Fame banquet
- Communicates with various coordinators to assist as needed
- Works with/assist Hall of Fame coordinator for Hall of Fame communication and planning of banquets
- Voting member of Executive Board

Executive Director/Treasurer

- Work with and report to Executive Board on a yearly basis
- Representative to WSCA and WIAA
- Co-Produces and distributes newsletter to general membership
- Planning and producing agendas for all WIBCA-related meetings
- Member of the NHSBCA Executive Board
- Entrusted with custody of funds for association
- Works with/assists Past President on fall clinic
- Works with/assists Northwest Shootout coordinator
- Voting member of Executive Board

President

- Co-Produces and distributes newsletter to general membership
- Assists in handling of finances for association
- Works with/assists Past President on fall clinic
- Works with/assists Corporate Development Director for sponsorship
- Works with/assists with Hall of Fame banquet coordinator
- Works with/assists scholarship award winners/distributes scholarship funds
- Oversees annual WIBCA meetings/assist with agenda creation
- Works with/assists with all state games
- Oversees spring clinic
- Voting member of Executive Board

Vice President

- Oversees scholarship program
- Works with President on major issues facing association.
- Member relations
- Assist with website
- Handles requested reimbursements

Secretary

- Note taker at annual meetings
- Assists with all state games
- Communicates with president on communications to be sent out.
- Oversees all Facebook and Twitter communication to members
- Responsible for all press releases

All coordinators of sectors and board members are voting members of the WIBCA Executive Board for WIBCA related issues and who is to be recommended to our membership for their vote for Hall of Fame induction.

WIBCA is a tax-exempt organization under 501(c)(3) of the Internal Revenue Code, Tax ID number 26-4593613. Your donation qualifies for a tax deduction as a charitable contribution to the extent permitted by law.

ANNUAL EVENTS SUPPORTED/HOSTED BY WIBCA

January

- WIBCA vs. Cancer Events (Statewide)

February

- Bi-Annual General Membership Meeting

March

- WSCA Individual Sports Associations Meeting & Executive Board Meeting
- All State Games

April

- Northwest Shootout
- Showcase Event

May

- Spring Coaches Clinic

June

- Northwest D1 Recruiting Showcase

July

- Hall of Fame Induction Banquet(s)
- NHSBCA General Membership Meeting

August

- WSCA Executive Board Retreat

September

- Executive Board Retreat

October

- Fall Coaches Clinic
- Bi-Annual General Membership Meeting

November

December

- WSCA Individual Sports Associations Meeting & Executive Board Meeting

*WIBCA is a tax-exempt organization under 501(c) (3) of the Internal Revenue Code, Tax ID number 26-4593613.
Your donation qualifies for a tax deduction as a charitable contribution to the extent permitted by law.*

WHAT WIBCA DOES FOR YOU

ALL STATE GAMES

PAT FITTERER “YOU GOTTA LOVE” IT COACH/CONTRIBUTOR AWARD

NORTHWEST SHOOTOUT

SPRING SHOWCASE AT BELLEVUE COLLEGE

HALL OF FAME INDUCTIONS

HEAD COACH~ASSISTANT COACHES~PEOPLE SERVICE AWARD~FITTERER AWARD

VOICE TO WIAA

WIBCA COACHES VS. CANCER

FALL & SPRING CLINICS

WEBSITE-WWW.WIBCA.COM/FACEBOOK PAGE/TWITTER

VOTING MEMBER OF THE NATIONAL HIGH SCHOOL BASKETBALL COACHES ASSOCIATION

WIBCA/BADEN SCHOLARSHIP (SENIORS)

STATE & NATIONAL AWARDS

STATE COACH OF THE YEAR AWARD

QUARTERLY NEWSLETTER

PLAYERS OF THE YEAR (6 CLASSIFICATIONS) AWARDS

MR. BASKETBALL (ONE FOR ALL CLASSIFICATIONS) AWARD

NOMINEES FOR NATIONAL FEDERATION OF HIGH SCHOOLS-COACH OF THE YEAR AWARD

NATIONAL HIGH SCHOOL BASKETBALL COACHES ASSOCIATION-STATE COACH OF THE YEAR AWARD

ALL BENEFITS OF WASHINGTON STATE COACHES ASSOCIATION TO WIBCA MEMBERS

COMPLIMENTARY ADMISSION TO WIBCA HALL OF FAME BANQUET

NORTHWEST JUNE DIVISION 1 RECRUITMENT SHOOTOUT

WIBCA is a tax-exempt organization under 501(c)(3) of the Internal Revenue Code, Tax ID number 26-4593613. Your donation qualifies for a tax deduction as a charitable contribution to the extent permitted by law.

www.wibca.com

Facebook - [Washington Interscholastic Basketball Coaches Association](#)
[Instagram@wa_state_coaches](#)

Twitter@WIBCA

Why Should I Become A Member of the WASHINGTON STATE COACHES ASSOCIATION?

This \$40 question is asked by many high school coaches in our state.

The first answer is that the WSCA is a professional organization for Washington State high school & middle level school coaches. **It exists to support your efforts as a coach.**

THE MAIN PURPOSES ARE:

- To offer top quality, affordable places to member coaches in the area's of professional education and training, to earn clock hours and coaching education hours.
- To offer a pass, using your membership card, for entry into **ALL** WIAA state tournaments, **ALL** regional tournaments, and **ALL** district tournament games, state wide!
- To offer **Liability Insurance coverage of \$3.5 million** for our membership while working a scheduled, sanctioned and supervised WIAA sport or event and or in the classroom.
- To offer your son or daughter, who are eligible, an opportunity to apply for WSCA scholarships. (i.e. *Burnett-Ennis, Student Teacher, Terry Ennis-Varsity Gold*)
- To be eligible for *WSCA Hall of Fame* recognition
- To be eligible for *WSCA Coach of the Year* recognition
- To be eligible to coach in sanctioned WSCA all star games. WIAA will only authorize WSCA sanctioned All-Star events.
- To receive reduced fee's at WSCA sponsored coaches' clinics and WIAA clock hours toward coaches education certification and/or salary placement.
- To honor member coaches for their coaching achievements through our *Career Award and Life Time Achievement Award* programs
- To receive quarterly issues of *The Washington Coach* magazine. Magazine is now online at www.washcoach.net or, upon request, coach can receive a hard copy of the magazine mailed to them.
- To provide reimbursement to each sport group for enrollment in WSCA.
- Complimentary entrance to the WIBCA Hall of Fame banquet

OTHER BENEFITS:

- Check our WEB page for up to date information www.washcoach.net
- **Membership registration is online at www.washcoach.net**
- Coordination with the state governing association (WIAA)
- Input through the Individual Sport Association Reps into the WSCA
- **By becoming a member of the WSCA you are taking a proactive approach to avoid problems in the future**

Investing in student-athlete basketball opportunities in the state of Washington

WIBCA PARTNERSHIP PACKAGES

WIBCA is a tax-exempt organization under 501(c)(3) of the Internal Revenue Code, Tax ID number 602178630.
Your donation qualifies for a tax deduction as a charitable contribution to the extent permitted by law.

Tim Gaebe
Capital Development, WIBCA
Showcase Director, WIBCA
509.993.4581
tgaebe@wibca.com



CHOOSE YOUR PLAN ↓	PRINT			DIGITAL		FACE-TO-FACE		
	Ad space in Hall of Fame Program	Ad space in All-State Games Program	Ad space in Showcase Event Program	Website Ad on Homepage	Custom E-blast by WIBCA	Fall Clinic Exhibit	Hospitality Room/ Exhibit at All State Games	Showcase Event Exhibit
HALF COURT SWISH Total Investment- \$5000				Banner Ad	4x	✓	✓	✓
THREE POINTER Total Investment- \$2500				Block Ad	3x	✓	✓	✓
TWO POINTER Total Investment- \$1000				Block Ad	2x	✓	✓	✓
FREE THROW Total Investment- \$500.00				Button Ad	1x	✓		✓

Your tax deductible check made out to **WIBCA** and send to: **Nalin Sood** WIBCA 20708 Maplewood Dr. Edmonds WA 98026

wibca.com

Facebook - Washington Interscholastic Basketball Coaches Association

Twitter@WIBCA

Instagram@wa_state_coaches

WIBCA vs Cancer

In 2000 the WIBCA board approved the formation of a committee to set up a Coaches vs. Cancer program in our state for high school basketball teams. Coaches vs. Cancer is a partnership dedicated to reducing the risk of cancer in youth, using fan contributions to assist research, patient seminars, and prevention programs with the American Cancer Society.

Over the past twenty years, the association has donated several hundred thousand dollars to the American Cancer Society through the efforts of many Washington High Schools.

There are many ways that each of us can become involved. This is the one cause that basketball coaches across the country have united in fighting. This is a great opportunity for students and coaches to impact their community in a positive way. For many high school students, this is their first experience with community-based service learning. Coaches and students have chosen to support Coaches v. Cancer in many ways. Teams choose how they want to best support the cause. Listed below are a few examples of what communities and teams have done in the past, but the options are determined by the coaches and teams.

- The awareness color for cancer is lavender so many schools sell lavender wristbands and ribbons.
- Donation tables at the entrance of the gyms and passing donation buckets in the stands at half-times.
- Three-point Challenge
- Auctions
- Jamborees
- Tournaments
- Apparel sales
- **The Coaches vs. Cancer Suits And Sneakers Week**, observed in January, is a nationwide event that unites coaches across the country to raise awareness about the American Cancer Society's lifesaving mission, and promotes the American Cancer Society as a source of help and support. Coaches wear sneakers with their game attire during this week as a visible reminder of the importance of nutrition and physical activity in reducing cancer risk.

If you are interested in starting a program at you school or have any questions about how to get involved then contact Gary Wusterbarth, Coaches vs. Cancer Chairman, at gawusterbarth@gmail.com for current information.

WIBCA is a tax-exempt organization under 501(c) (3) of the Internal Revenue Code, Tax ID number 26-4593613.

Your donation qualifies for a tax deduction as a charitable contribution to the extent permitted by law.

HALL OF FAME

Head Coach Information

Eligibility: Nominees should have completed a minimum of 25 years coaching basketball in the state of Washington and netted at least 300 wins as a head coach. They may be retired or currently coaching.

Process:

- The nominator must be a current coach in the state of Washington.
- Nominator must fill out the application and submit.
- Minimum of 3 Letters of Recommendation must be submitted. These letters may be written by administrators, fellow coaches, former players or community members.
- A nominator may only nominate 1 person per year.

Assistant Coach Information

Eligibility: Nominees should have completed a minimum of 25 years coaching basketball in the state of Washington. They may be retired or currently coaching.

Process:

- The nominator must be a current coach in the state of Washington.
- Nominator must fill out the application and submit.
- Minimum of 3 Letters of Recommendation must be submitted. These letters may be written by administrators, fellow coaches, former players or community members.
- A nominator may only nominate 1 person per year.

Selection Procedure:

1. Applications & letters of recommendation submitted by September 1
2. Sept-Oct: WIBCA Executive Board Reviews files
3. October: Executive Board selects Hall of Fame candidates
4. October: WIBCA membership approves selections at Fall Meeting
5. Chairman informs all nominees of the Board Decision
6. Hall of Fame Banquet in July: date and place TBD.

Email all documents to WIBCA Hall of Fame Chairman, Dave Dickson at david.dickson@bellingshamschools.org

Any questions, contact Dave Dickson at (360) 201-5218

Link to WIBCA Hall of Fame page and nomination forms:

- <http://wibca.com/nomination-forms/>

*WIBCA is a tax-exempt organization under 501(c) (3) of the Internal Revenue Code, Tax ID number 26-4593613.
Your donation qualifies for a tax deduction as a charitable contribution to the extent permitted by law.*

SECTION 8
June Division 1 Shootout
June, 2019

128 of the best high school boys' basketball players in the United States gathered at Bellevue College on June 29th and 30th of 2019 to be evaluated by NCAA Division 1 and coaches from all other levels of collegiate basketball from around the country. The event ran from Saturday, June 29th at 10:00 AM and concluded Sunday, June 30th with a championship starting at 1:10 PM. The event brought high school and college coaches together in an attempt to collaboratively involve both groups more in the recruitment of student-athletes to college basketball programs.

The event was presented by a partnership between the Washington Interscholastic Boys Basketball Coaches Association (WIBCA) and the Washington Interscholastic Activities Association (WIAA) under the guidance and direction of the National Federation of State High School Association and the National Collegiate Athletic Association.



WIBCA is a tax-exempt organization under 501 (c) (3) of the Internal Revenue Code, Tax ID number 26-4593613. Your donation qualifies for a tax deduction as a charitable contribution to the extent permitted by law.

Past President
Pat Fitterer
Highland SD
Cowiche, WA
509 952-5317
coachfitterer@hotmail.com

Executive Director
Nalin Sood
Mountlake Terrace HS
Mountlake Terrace, WA
206.419.3062
soodn@edmonds.wednet.edu

President
Joe Harris
Chelan High School
Chelan WA
509 679 4515
harrisj@chelanschools.org

Vice President
Bruce Siebol
Sunnyside HS
Sunnyside, WA
509.945.0359
BSiebol@msn.com

Secretary
Keffrey Fazio
West Seattle HS
Seattle, WA
253.250.8989
coachfazio.wshs@gmail.com

Northwest Shootout
Bill Bakamus
Mark Morris HS
Longview, WA
360.430.3077
bbakamus@longview.k12.wa.us

Hall of Fame Director
Dave Dickson
Squalicum HS
Bellingham, WA
360.201.5218
david.dickson@bellingshamschools.org

Coaches v. Cancer Chairman
Gary Wusterbarth
Steilacoom HS
Steilacoom, WA
253.983.2372
Gwusterbarth@steilacoom.k12.wa.us

International Tours
Tim Kelly
Curtis HS
University Place, WA
253.232.8018
tkelly@upsd83.wednet.edu

Corporate Development/
Spring Showcase
Tim Gaebe
Retired
Spokane, WA
509.993.4581
gaebe@comcast.net

WIBCA Showcase

Non Division 1 Event (Currently)

- Held during end of April or May each year
- Attempt to get as many unsigned seniors as possible
- **Teams**
 - 160 student-athletes participating
 - 10 per team, play evenly until last 3 minutes (IF a chance to win coaches discretion)
- Each participant keep reversible tops. Jersey numbers are #1 through #160
- General Admission program and a separate coaches program/roster
- 16 teams *schedule attached*
- **Coordinators**
 - 6 area coordinators are oversee putting respective teams together
 - Each coordinator organizes any travel and necessary hotel accommodations
 - Participants are normally on their own w/guardian
- **Fees**
 - 16 coaches and coordinators are paid a fee
 - Showcase support staff are paid a fee
 - Scorekeeper
 - ScorebookLive
 - Clock persons-2 people per court
 - Technology/media person
 - Host at the admissions
 - Provide apparel, etc.
 - Needed lodging for coaches
 - Lunch/drinks provided for coaches and college coaches
 - Social Saturday night.

*WIBCA is a tax-exempt organization under 501(c) (3) of the Internal Revenue Code, Tax ID number 26-4593613.
Your donation qualifies for a tax deduction as a charitable contribution to the extent permitted by law.*

18 YEARS WIBCA SHOWCASE PLAYERS BY HIGH SCHOOL

Aberdeen - 1	Fort Vancouver - 1
Almira-Coulee-Hartline - 2	Ingraham - 1
Arch Bishop Murphy - 1	Jackson - 2
Battle Ground - 1	Jefferson - 2
Bethel - 2	Kamiak - 1
Bremerton - 1	Kelso - 1
Brewster - 1	Kennewick - 3
Camas - 2	Kentridge - 2
Cashmere - 1	Kentwood - 2
Cedar Park Christian - 2	Lakeland, Idaho - 2
Central Valley - 5	Lake Roosevelt - 3
Centralia - 1	Lake Stevens - 2
Chelan - 1	Lapwai, Idaho - 1
Chiawana - 1	Lewis & Clark - 4
Clarkston - 3	Liberty - 1
Columbia River - 1	Liberty Spokane - 1
Cusick - 1	Lummni Nation - 1
Curtis - 19	Mark Morris - 16
Darrington - 1	Mariner - 1
Davis - 2	Mead - 4
Deer Park - 1	Mercer Island - 2
Eastside Catholic - 3	Morton-White Pass - 1
Edmonds Woodway - 1	Moses Lake - 2
Elma - 1	Mountlake Terrace - 20
Emerald Ridge - 1	Mt. Spokane - 7
Eisenhower - 3	Napavine - 1
Federal Way - 2	Nathan Hale - 2
Ferris - 6	North Central - 4
Freeman - 1	North Kitsap - 1
Forks - 1	North Thurston - 2
Glacier Peak - 3	Northwest - 1
Gonzaga Prep - 6	Northwest Christian - 1
Graham-Kepowsin - 1	Omak - 1
Grandview - 1	Post Falls, Idaho - 5
Hanford - 1	RA Long - 1
Franklin - 3	Rainier Beach - 4
Franklin Pierce - 1	Richland - 3

*WIBCA is a tax-exempt organization under 501(c) (3) of the Internal Revenue Code, Tax ID number 26-4593613.
Your donation qualifies for a tax deduction as a charitable contribution to the extent permitted by law.*

River Ridge - 2
Rogers Spokane - 4
Roosevelt - 1
Seattle Prep - 1
Sehome - 1
Selah - 1
Sentinel, Montana - 2
Shadle Park - 16
Shorecrest - 3
Skyline - 1
Skyview - 2
Southridge - 2
Squalicum - 1

Sumner - 1
Todd Beamer - 2
Toppenish - 1
Union - 1
University - 5
West Seattle - 1
West Valley Spokane - 1
West Valley Yakima - 6
WF West - 1
White River - 4
Yelm - 1
Zillah - 7

*WIBCA is a tax-exempt organization under 501(c) (3) of the Internal Revenue Code, Tax ID number 26-4593613.
Your donation qualifies for a tax deduction as a charitable contribution to the extent permitted by law.*

Patrick Fitterer-“You Gotta Love It” Positive Coach Contributor Award

Award Description

This award is presented annually to one boy’s coach who has had a transformational effect on the lives of their respective players and coaches, and also had a significant positive impact at their school or within their community. The recipient should be respected by their players and fellow coaches for their dedication, their positive approach, and their integrity on and off the court.

Eligibility

The nominee must have at least four years of experience coaching high school basketball as an assistant or head coach.

Submissions

Nominations may be submitted by an athletic director, coach, player, parent, or supporter. Please submit the nomination via email to: soodn@edmonds.wednet.edu Submissions must be received by March 31st of each calendar year. No submissions will be considered after this time.

<https://wibca.com/form-positive-coach-contributor-award/>

*WIBCA is a tax-exempt organization under 501(c) (3) of the Internal Revenue Code, Tax ID number 26-4593613.
Your donation qualifies for a tax deduction as a charitable contribution to the extent permitted by law.*



Washington Interscholastic Basketball Coaches Association (WIBCA) Baden Basketball Scholarship

Completed forms must be returned by Friday, March 15, 2019 to: Keffrey Fazio kjfazio@seattleschools.org

Full Name: _____
Last Name First Middle

Address: _____

Date of Birth: _____ Phone (with area code): _____

Student/Athlete Email: _____ Parent/Guardian Email: _____

High School: _____

Graduation Date: _____

School Address: _____

This \$1000.00 scholarship is available to an outstanding senior basketball player who best represents the attributes that are inherent in a student athlete:

- Academic rigor
- Attitude/leadership
- Community service
- Athletic ability.

Criteria:

- a) Must have demonstrated a commitment to Community Service
- b) Must Demonstrate leadership capabilities
- c) Must exhibit qualities with regard to school spirit, passion, dedication, and strong work ethic.
- d) Type a one-page summary of how you exhibit the characteristics of: academic rigor, attitude/leadership, community service and athletic ability.
- e) Applicant must be pursuing a post-high school education

*WIBCA is a tax-exempt organization under 501(c) (3) of the Internal Revenue Code, Tax ID number 26-4593613.
Your donation qualifies for a tax deduction as a charitable contribution to the extent permitted by law.*

What to do:

1. Submit application by deadline
2. Submit letters of recommendation from your high school head coach and one of the following: a teacher, counselor or administrator from your school.
3. Submit your high school transcript.
4. Only one applicant **per school**.
5. Submit an essay that summarized how you represent the aforementioned attributes listed above.
6. ALL documents must be submitted by email to: Keffrey Fazio kjfazio@seattleschools.org

Signature _____
Sign and date application

Date: _____

*WIBCA is a tax-exempt organization under 501(c) (3) of the Internal Revenue Code, Tax ID number 26-4593613.
Your donation qualifies for a tax deduction as a charitable contribution to the extent permitted by law.*

**ARTICLES OF INCORPORATION
OF**

The undersigned Incorporator of _____, a
_____ corporation, adopts the following Articles of Incorporation:

**ARTICLE I
Name**

The name of the corporation is _____.

**ARTICLE II
Duration**

The period of the corporation's duration is _____.

**ARTICLE III
Purpose**

The purpose for which the corporation is organized is to conduct any and all lawful business for which corporations can be organized pursuant to _____ statute, including but not limited to:

_____.

**ARTICLE IV
Powers**

The corporation has the power to engage in any lawful activity under the corporation code of the State of _____, including opening and operating a bank account.

ARTICLE V
Initial Registered Agent

5.01 The name of the initial registered agent is:

5.02 The street address of the registered agent is:

ARTICLE VI
Statement of Acceptance by Registered Agent

I, _____, hereby acknowledge that the undersigned individual or corporation accepts the appointment as Initial Registered Agent of _____, the corporation which is named in these Articles of Incorporation.

Registered Agent

ARTICLE VII
Principal Office and Mailing Address

7.01 The complete street address of the initial designated principal office is:

7.02 The complete mailing address is:

ARTICLE VIII
Authorized shares

8.01 The number of shares of stock the corporation has the authority to issue is: _____.

8.02 The class of stock issued shall be _____ stock.

8.03 Each share shall have a par value of \$_____.

Article IX
Directors and Officers

The Corporations' initial Board of Directors and Officers shall be comprised of the following persons:

Name	Title	Address
_____	_____	_____
_____	_____	_____
_____	_____	_____
_____	_____	_____
_____	_____	_____

ARTICLE IX
Bylaws

The incorporator shall adopt the initial bylaws of the corporation. The stockholders may amend the bylaws at anytime by the provisions therein.

ARTICLE X
Dissolution

Upon dissolution, assets shall be distributed by the Board of Directors according to the applicable State statute. Further provisions regarding distribution upon dissolution shall be stated in the Corporation's bylaws.

ARTICLE XI
Indemnification

The corporation does indemnify any directors, officers, employees, incorporators, and shareholders of the corporation from any liability regarding the corporation and the business of the corporation, unless the person fraudulently and intentionally violated the law and/or maliciously conducted acts to damage and/or defraud the corporation, or as otherwise provided under applicable state corporate statute.

ARTICLE XII
Incorporator

I, _____, residing at _____,
execute these Articles of Incorporation dated this _____ day of
_____, _____.

Incorporator

Correspondence Information is:

